



# Eudora® 7 Email

*Reviewer's Guide*

October 2005  
QUALCOMM Incorporated



## TABLE OF CONTENTS

---

EUDORA 7 PRODUCT INTRODUCTION .....	1
EUDORA USERS .....	2
EUDORA 7 PRODUCT MODES .....	3
EUDORA 7 KEY FEATURES.....	4
ULTRA-FAST SEARCH.....	4
BOSSWATCH .....	5
IMPROVED IMAP .....	5
S/MIME SECURITY .....	5
SYSTEM REQUIREMENTS.....	6
PRICING AND AVAILABILITY.....	7
CONTACT INFORMATION .....	8

---

## EUDORA® 7 PRODUCT INTRODUCTION

---

### *New in Eudora 7*

Eudora 7 for Windows OS delivers a host of new features and benefits to users looking for a robust, full-featured email program with an array of new productivity tools. Adding to the top-rated SpamWatch junk mail quarantine introduced with Eudora 6.0, Eudora 7 now also offers an Ultra-Fast Indexed Search. Also new, Eudora introduces BossWatch, a feature that alerts users about the presence of designated addresses in the recipient field. IMAP (Internet Message Access Protocol) users will enjoy greatly increased performance as well as additional offline capabilities. For Enterprise users, Eudora 7 adds S/MIME (Secure Multi-purpose Internet Mail Extensions) plug-in capability.

New components include:

- Ultra-Fast Indexed Search – Searches hundreds of thousands of emails instantaneously
- BossWatch – Alerts the sender of important addresses in the recipient field
- IMAP improvements – Greatly increased performance and offline capabilities
- Security – S/MIME plug-in capability allows email sending with encrypted certificates

## EUDORA USERS

---

Eudora 7 is designed for people who rely on email communication at work and at home. Users can select from three modes of Eudora email: Paid mode, Sponsored mode, and Light mode. With millions of users worldwide, QUALCOMM continues to make significant Eudora product enhancements to simplify email management, improve the user experience and improve online security. Eudora's popular email software is flexible enough to meet the needs of any user including:

**Large organizations** — Email is critical to all phases of the communication cycle, including correspondence between teams within the company, document sharing and client communication.

**SOHO and small business users** — Small office and home office users rely heavily on email and demand a powerful and convenient email communication solution for mixed platform environments.

**Individual consumers** — Eudora offers a solution for individuals looking for a convenient and easy-to-use email program to enhance and ease communication with family, friends and colleagues. Eudora keeps people in touch regardless of their level of technical expertise.

### NOTABLE EUDORA SITE LICENSEES:

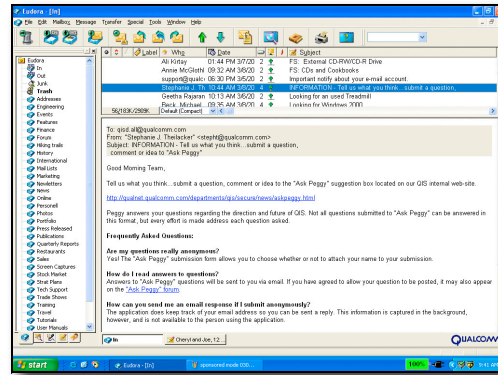
---

- NASA
- Real Networks
- Lawrence Livermore National Laboratory
- Los Alamos National Laboratory
- Harvard University
- Stanford University
- Yale University
- Adobe Systems Incorporated
- University of Pennsylvania
- Schlumberger Limited
- New York Times

## EUDORA 7 PRODUCT MODES

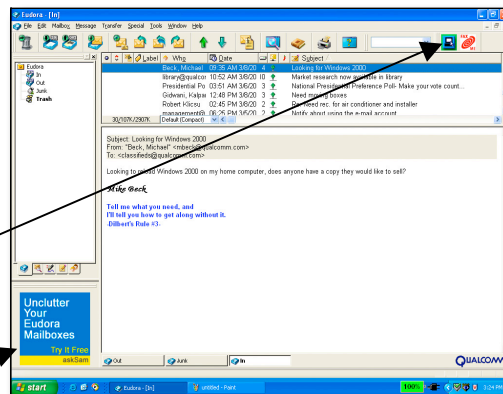
### Eudora 7 offers three user-selectable operating modes

**Paid mode** – Eudora in Paid mode is the full-featured Eudora email desktop client. Paid mode includes SpamWatch, to stamp-out unwanted junk mail, ultra-fast indexed search and BossWatch. For an annual fee, users receive Eudora in Paid Mode. For 12 months after their registration, they also receive person-to-person technical support and all upgrades.

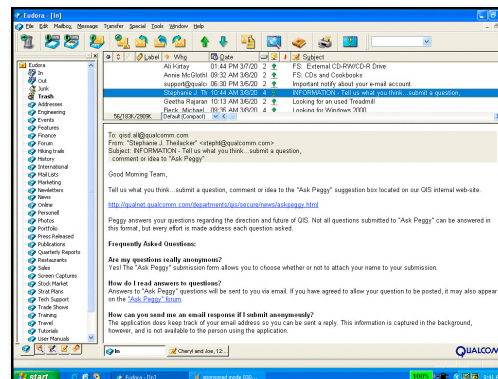


**Sponsored mode** – Supported by advertising, the Sponsored mode provides the same full-features as Paid mode, except SpamWatch, ultra-fast search and BossWatch, at no charge. Live technical support is not available in Sponsored mode. The ads are displayed as follows:

- 1) Sponsored toolbar link (restricted to a maximum of 3 email-centric products and services)
- 2) Ad window that displays 144 x 144 pixel unobtrusive static rotating ads.



**Light mode** – Eudora in Light mode is free, has fewer features and contains no ad window.



## EUDORA 7 KEY FEATURES

### *From the Security Measures Added in Eudora 6 to the Productivity of Eudora 7...*

Eudora is proud to take the lead among all email clients to provide ultra-fast, as-you-type results when searching decades and gigabytes worth of email. Eudora's has long been recognized as the productivity email client to beat when it comes to storing, filtering and searching vast historical archives of email. Eudora 7 takes another leap by providing an indexed search that is so fast that finding a single important email is seconds away. Ultra-fast search, combined with the innovative BossWatch feature, Eudora 7 delivers on our ongoing mission to help users deal with the ever-increasing volume of email.

### **New!** *Ultra-Fast Indexed Search*

Powered by X1®, the new Eudora 7 search engine can find results instantaneously, even from hundreds of thousands of stored emails. Eudora has long been the email software of choice for users that maintain decades of email archives. Eudora's well-organized, user-friendly search interface has been recognized by users and the press for finding that important email from 10 years ago. Now with X1's ultra-fast, power-search, the results are found instantaneously.

### **Ultra-FAST** Indexed Search

The screenshot displays two search results windows. The left window shows search criteria: Subject contains 'review' and Headers contains 'draft'. The right window shows search results for 'review' in 44 mailboxes, with 10 matches listed in a table.

Mailbox	Who	Date	Subject
In	Daron	11:27 AM 11/15/2003	Fwd: R1 draft for REVIEW/ - acc
Engineering	Eve Bering	03:06 PM 5/3/2005	QIS Internal Ops: Review PPT d
Marketing	Michele Evens	11:23 AM 3/30/2005	Fwd: For Your Review: Eudora
Marketing	Gina Lorash	02:24 PM 3/31/2004	RE: For Your Review: Eudora p
Marketing	Michele Evens	12:20 PM 1/27/2005	Fwd: RE: For your review: Rela
Marketing	Akano	05:48 PM 1/27/2005	RE: RE: For your review: Reilan
Press Relations	Cunningham, J...	01:24 PM 3/30/2004	For Your Review: Eudora press
Press Relations	Cunningham, J...	02:43 PM 3/31/2004	For Your Review: Eudora press
Press Relations	Cunningham, J...	05:03 PM 3/31/2004	For Your Review: Eudora press
Press Relations	Daron	03:06 PM 5/3/2004	QIS Internal Ops: Review PPT d

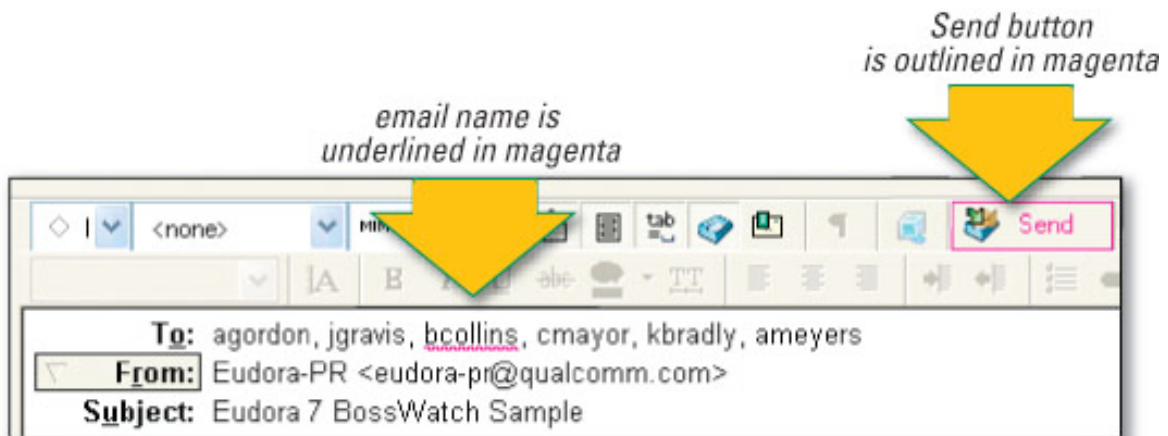
*Instant results for this search of over 300,000 emails!*

## EUDORA 7 KEY FEATURES (CONTINUED)

**New!**

### **BossWatch:**

Eudora 7's new BossWatch feature provides an extra level of awareness to the addresses in a recipient field. This can be used for example when responding with 'Reply All' to a list that includes colleagues and clients. Additional sensitivity or explanation may be warranted in addressing a client. BossWatch will alert the user to the presence of email addresses that are designated based on personal communication preferences. These addresses can be designated by name or domain. The magenta **Send** button text and underlined name in the Recipient field will alert the user of the clients address in the reply list.



**New!**

### **Improved IMAP:**

Eudora 7 offers improved IMAP functionality to synchronize and access email from multiple devices and locations. The IMAP mail protocol provides remote access to email, allowing the review of headers as well as the ability to file and organize mail remotely. With Eudora 7, the multiple computer, or multiple device IMAP user will now enjoy greatly increased performance and the ability to work off-line.

**New!**

### **Security – S/MIME:**

Eudora 7 offers S/MIME plug-in functionality. The S/MIME personal email certificate allows users to secure email communications by digitally signing and encrypting emails. The S/MIME certificates are available at <http://www.thawte.com/email/inex.html>.

## **SYSTEM REQUIREMENTS**

---

### **EUDORA VERSION 7 FOR WINDOWS**

- Microsoft Windows 98/2000/Me/XP or Windows NT 4.0 operating system or above
- Mail account with an Internet service provider (POP or IMAP)
- Access to mail account via a modem or Internet-style network connection

### **EUDORA VERSION 6.2 FOR MAC OSX**

- Macintosh operating system 10.0 or above
- Mail account with an Internet service provider (POP or IMAP)
- Access to mail account via a modem or Internet-style network connection

## PRICING AND AVAILABILITY

---

In November 2005, Eudora 7 will be commercially available in Paid, Sponsored and Light modes as an electronic download from [www.eudora.com](http://www.eudora.com), as well as from other online download sites. By default, the download will install in Sponsored mode. The user may choose either of the other modes from the Payment & Registration dialog, selected from the Help menu. Pricing is as follows:

- **Paid mode**
  - Free for users who purchased a Eudora subscription within the last 12 months.
  - \$39.95 for users with an active subscription registration code within 12 to 24 months from registration.
  - \$49.95 for a new subscription
- **Sponsored mode** - Free
- **Light mode** - Free

## CONTACT INFORMATION

---

QUALCOMM offers online technical support on our website. Visit [www.eudora.com](http://www.eudora.com) and click on "Support" in the header bar. Users of Eudora in Paid mode receive free phone or email tech support of up to six incidents a year. QUALCOMM does not provide live support for Eudora Sponsored mode or Light mode users.

For press inquiries only, contact:

Eudora PR  
[eudora-pr@qualcomm.com](mailto:eudora-pr@qualcomm.com)  
858-587-1121



Note: QUALCOMM is not liable for technical or editorial errors and/or omissions contained herein; nor for incidental or consequential damages resulting from the furnishing or use of this material. The information provided herein is subject to change without notice.