

DEEP "SIX" YOUR SPAM...



Eudora® 6.2 Email

Reviewer's Guide

November 2004
QUALCOMM Incorporated



TABLE OF CONTENTS

EUDORA 6.2 PRODUCT INTRODUCTION	1
EUDORA USERS	2
EUDORA 6.2 PRODUCT MODES	3
EUDORA 6.2 KEY FEATURES.....	4
SCAMWATCH	4
OPEN SSL	5
IMPROVED IMAP	5
EMOTICONS	5
PRESS AND USER COMMENTS	6
SYSTEM REQUIREMENTS FOR EUDORA 6.2	7
PRICING AND AVAILABILITY	8
CONTACT INFORMATION	9

EUDORA 6.2 PRODUCT INTRODUCTION

“U.S. Consumer Loss of Phishing Fraud to Reach \$500 Million”

- TRUSTe, September 2004

“Online Swindlers, Called ‘Phishers,’ Lure Unwary Consumer ”

- NY Times, March 2004

“Fake e-mails fool users 28 percent of the time, study finds”

- MSNBC, July 2004

New in Eudora 6.2

Eudora 6.2 delivers a host of new features and benefits to users looking for a robust, full-featured email program with an array of new security tools. Adding to the top-rated SpamWatch junk mail quarantine introduced with Eudora 6.0, Eudora 6.2 now also offers ScamWatch, a new feature that combats ‘phishing’ schemes that use deceptive URLs in email to gather personal information. Eudora 6.2 also offers improved SSL security with Open SSL, commonly used by enterprise environments. Also new are IMAP improvements for better email synchronization between multiple computers and locations and; 24 originally designed emoticons to add color and personality to users’ emails.

New components include:

- ScamWatch – Combats ‘phishing’ schemes (consumer security)
- Open SSL – Site security improvement
- IMAP improvements – Synchronization with multiple computers and locations
- Emoticons – 24 new, originally designed emoticons add color and character

“Nearly 2 Million Americans Fall Victim To Bank Fraud”

- *The Wall Street Journal*, May 2004

“Nearly one out of three Internet users was unable to tell the difference between fraudulent e-mails designed to steal their identities and legitimate corporate e-mail, a new study finds.”
- *MSNBC*, July 2004

"Nearly 2 million Americans have had their checking accounts raided by criminals in the past 12 months, according to a soon-to-be released survey by market research group Gartner. Consumers reported an average loss per incident of \$1,200, pushing total losses higher than \$2 billion for the year." - *Gartner Group*, April 2004

EUDORA USERS

Eudora 6.2 is designed for people who rely on email communication at work and at home. Users can select from three modes of Eudora email: Paid mode, Sponsored mode, and Light mode. With millions of users worldwide, QUALCOMM continues to make significant Eudora product enhancements to simplify email management, improve the user experience and improve online security. Eudora's popular email software is flexible enough to meet the needs of any user including:

Large organizations — Email is critical to all phases of the communication cycle, including correspondence between teams within the company, document sharing and client communication.

SOHO and small business users — Small office and home office users rely heavily on email and demand a powerful and convenient email communication solution for mixed platform environments.

Individual consumers — Eudora offers a solution for individuals looking for a convenient and easy-to-use email program to enhance and ease communication with family, friends and colleagues. Eudora keeps people in touch regardless of their level of technical expertise.

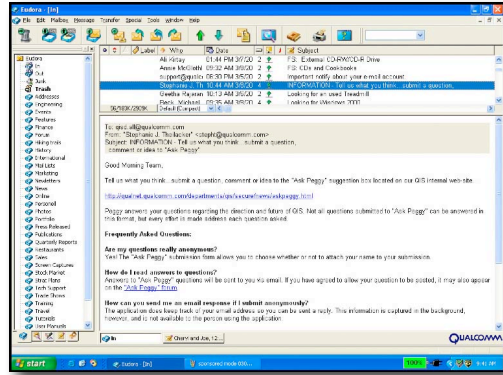
NOTABLE EUDORA SITE LICENSEES:

- NASA
- Real Networks
- Lawrence Livermore National Laboratory
- Los Alamos National Laboratory
- Harvard University
- Stanford University
- Yale University
- Adobe Systems Incorporated
- University of Pennsylvania
- Schlumberger Limited
- New York Times

EUDORA 6.2 PRODUCT MODES

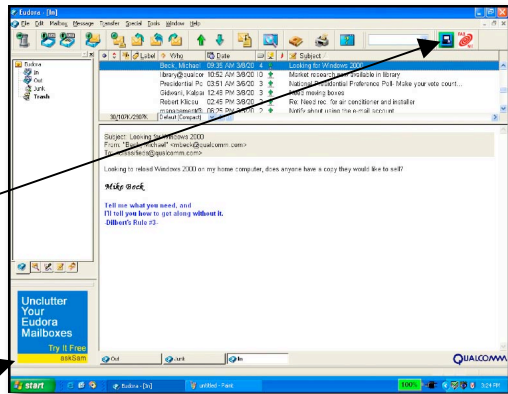
Eudora 6.2 offers three user-selectable operating modes

Paid mode – Eudora in Paid mode is the full-featured Eudora email desktop client. Paid mode includes SpamWatch, to stamp-out unwanted junk mail, and WebWords for convenient web searches. For an annual fee, users receive Eudora in Paid Mode. For 12 months after their registration, they also receive person-to-person technical support and all upgrades.



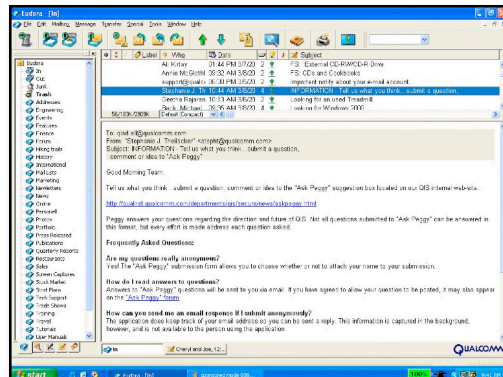
Sponsored mode – Supported by advertising, the Sponsored mode provides the same full-features as Paid mode, except SpamWatch, at no charge. Live technical support is not available in Sponsored mode. The ads are displayed as follows:

- 1) Sponsored toolbar link (restricted to a maximum of 3 email-centric products and services)
- 2) Ad window that displays 144 x 144 unobtrusive static rotating ads.



pixel

Light mode – Eudora in Light mode is free, has fewer features and contains no ad window.



EUDORA 6.2 KEY FEATURES

From SpamWatch to ScamWatch, New Security Measures...

Eudora is proud to take the lead among all email clients to provide some user protection against 'phishing' schemes, the latest Internet menace. Succeeding SpamWatch and MoodWatch, ScamWatch is the latest in a series of innovative features designed to protect users' security, while still enabling them to manage the growing volume of email.

New! *ScamWatch*

A new TRUSTe study found that 70% of email users unknowingly visited a spoofed Web site and 15% have divulged personal information such as credit card or social security numbers.

"Phishing" is the act of sending an email falsely claiming to be an established legitimate enterprise, in an attempt to scam the user into surrendering private information that can be used for identity theft.

In response to the growing problem of online 'phishing' schemes, Eudora 6.2 introduces ScamWatch, which analyzes the weblinks within email messages for deceptive phishing practices and warns the user to exercise caution before making the connection. Specifically, ScamWatch looks for the use of IP addresses rather than hostnames or hostnames in link URLs that don't match hostnames in the link text.

How ScamWatch works:

Locating the cursor over an embedded email hypertext link produces a URL check. If the link served in email is different from the landing page URL or is an IP address rather than a hostname, a yellow pop-up window points out the difference, as shown in the examples below.

<http://209.13.96.44/verification/>

The host, <http://209.13.96.44/verification/>, is a numerical IP address; most legitimate sites use names, not addresses.

<http://www.paypal.com/member>

<http://www.service.paypal.com.to>

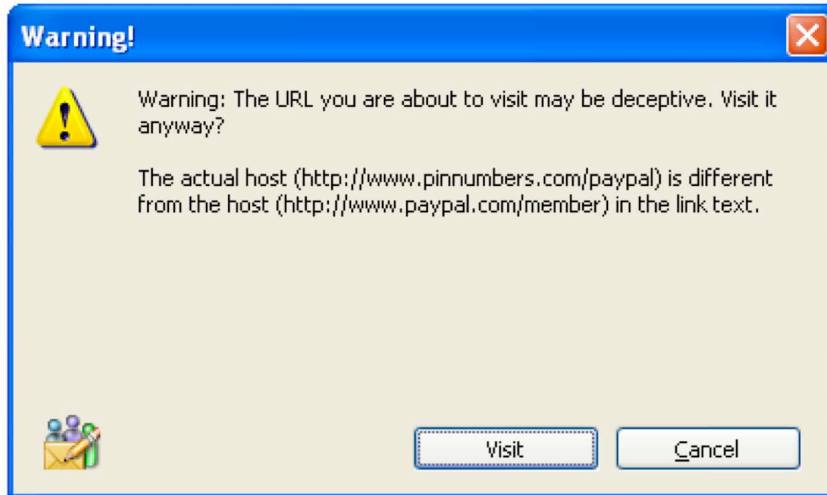
The host, <http://www.service.paypal.com.to>, contains a top-level domain, and may be pretending to be another site.

The actual host (<http://www.pinnumbers.com/paypal>) is different from the host (<http://www.paypal.com/member>) in the link text.

EUDORA 6.2 KEY FEATURES (CONTINUED)

Actual clicking on that suspicious link would produce a warning, like this:

<http://www.paypal.com/member>.



New! *Open SSL:*

Also addressing security for the enterprise environment, Eudora 6.2 now uses OpenSSL, the state-of-the-art standard in email security and encryption. The OpenSSL Project is a collaborative effort to develop a robust, commercial-grade, full-featured, implementation of Secure Sockets Layer (SSL v2/v3) and Transport Layer Security (TLS v1) protocols as well as a full-strength general-purpose cryptography library. You can learn more about it at <<http://www.openssl.org>>

New! *Improved IMAP:*

Eudora 6.2 offers improved IMAP functionality to synchronize and access email from multiple devices and locations. For Macintosh users, Eudora's offline IMAP performance takes a big step forward by allowing offline deletions and online message management in a nearly seamless fashion. Windows Eudora users in IMAP will notice significant improvements in filtering and message synchronization.

New! *Emoticons:*

By popular demand, Eudora 6.2 users can save words and express emotions, with added color and character. Eudora adds 24 new originally designed emoticons to its vocabulary, automatically converting ascii emoticons like : -) into colorful, expressive pictures. (Not available in Light mode).



THE PRESS AND USERS SAY...

About.com, September 2004

- “ 4½ out of 5 stars “Eudora is a classic, powerful, flexible and efficient email client that cans spam precisely too... ”
- *Heinz Tschabitischer*

Macintosh Guild, August 2004

- “ 4½ out of 5 mice “...arguably the easiest email client I've ever used ”
- *Bill Catambay*

PC World Magazine, July 2004

- “ ...version 6.1 gives you a couple of extra reasons to check out this e-mail client, which has one of the better built-in spam filters around. ”
- *Yardena Arar*

Release 4.0, April 2004

- “ Eudora is the gold standard to beat as far as I'm concerned ”
- *Esther Dyson, Editor at large,
CNET Networks*

PC Magazine, February 2004

- “ Four-Star Award: Eudora's interface is one of the most intuitive in this roundup. ”

Visit www.eudora.com/press for more News and Press Releases

PCMag.com Member Comments:

- “ Eudora does MORE than give Outlook users an alternative. It provides a great anti-spam filter without Microsoft's penchant for swiss-cheese security. Worth every penny and then some. ”
- *g_kidd*

- “ I switched to Eudora at home and work about two years ago. Got tired of the Virus-prone, resource hogging nature of Outlook. Very easy to install Eudora and the tutorials they have are quite good. I would recommend it highly. ”
- *sjaves*

Visit <http://www.eudora.com/press/testimonials.html> for more testimonials.

SYSTEM REQUIREMENTS FOR EUDORA 6.2

PC

- Microsoft Windows 98/2000/Me/XP or Windows NT 4.0 operating system or above
- Mail account with an Internet service provider (POP or IMAP)
- Access to mail account via a modem or Internet-style network connection

MAC OSX

- Macintosh operating system 10.0 or above
 - Mail account with an Internet service provider (POP or IMAP)
 - Access to mail account via a modem or Internet-style network connection
-

PRICING AND AVAILABILITY

In November 2004, Eudora 6.2 will be available commercially in Paid, Sponsored and Light modes as an electronic download from www.eudora.com, as well as from other online download sites. By default, the download will install in Sponsored mode. The user may choose either of the other modes from the Payment & Registration dialog, selected from the Help menu. Pricing is as follows:

- **Paid mode**
 - Free for users who purchased a Eudora subscription within the last 12 months.
 - \$39.95 for users with an active subscription registration code within 12 to 24 months from registration.
 - \$49.95 for a new subscription
- **Sponsored mode** - Free
- **Light mode** - Free

CONTACT INFORMATION

QUALCOMM offers online technical support on our website. Visit www.eudora.com and click on "Support" in the header bar. Users of Eudora in Paid mode receive free phone or email tech support of up to six incidents a year. QUALCOMM does not provide live support for Eudora Sponsored mode or Light mode users.

For press inquiries only, contact:

Eudora PR
eudora-pr@qualcomm.com
858-587-1121



Note: QUALCOMM is not liable for technical or editorial errors and/or omissions contained herein; nor for incidental or consequential damages resulting from the furnishing or use of this material. The information provided herein is subject to change without notice.